

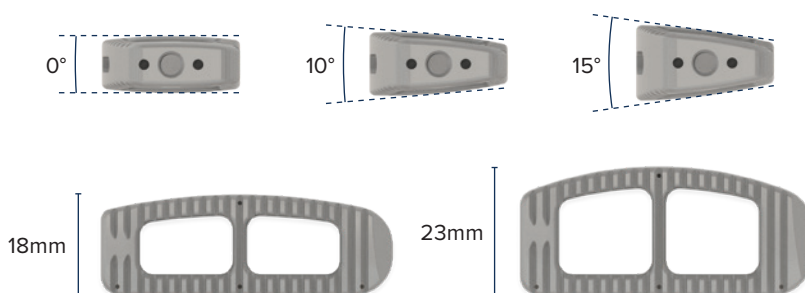
# REGATTA<sup>®</sup>

LATERAL LUMBAR INTERBODY SYSTEM  
SALES BROCHURE

**Regatta**® is a comprehensive lateral lumbar interbody system designed to safely and reproducibly treat the spine through indirect decompression and the restoration of sagittal alignment. By combining a PEEK implant with NanoMetalene® Surface Technology, Regatta delivers an interbody solution with the best attributes of both materials to provide optimal environment for fusion.

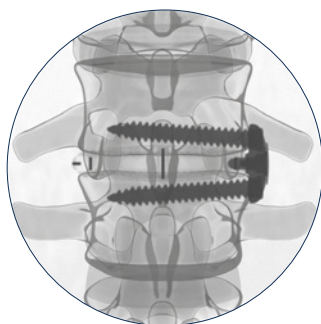
## INTERBODY FEATURES

- Complete endplate coverage
- Maximized graft aperture
- Width: 18mm & 23mm
- Length: 40–60mm
- Height: 8–14mm
- Lordosis: 0°, 10°, 15°

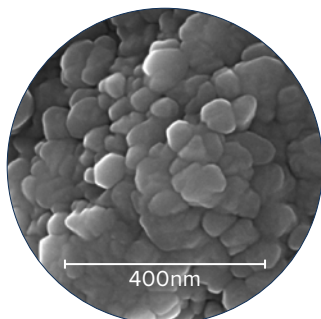


## NanoMetalene® Surface Technology

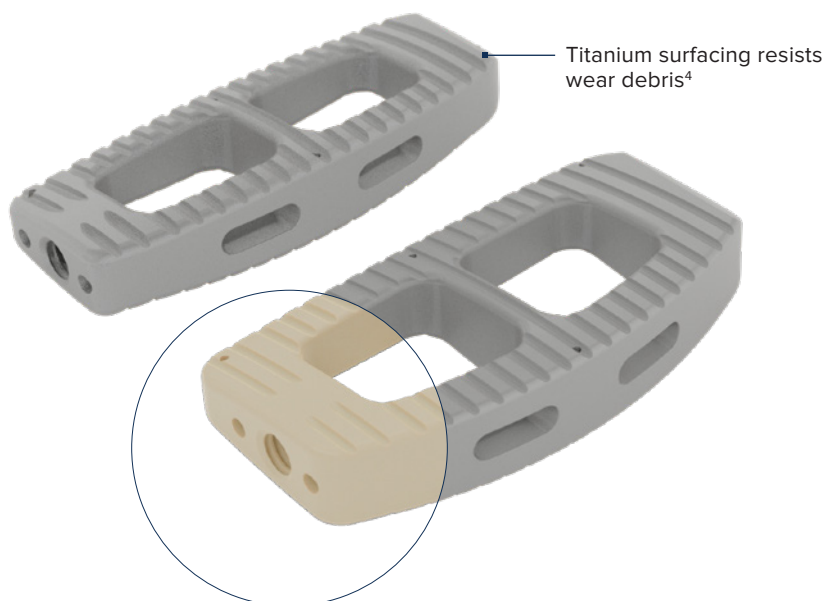
Submicron titanium layer molecularly bonded to entire PEEK implant.



Radiolucent for post-op fusion assessment<sup>1</sup>



Rough nano-scale topography encourages integration<sup>2,3</sup>



Mechanical properties of PEEK unaltered, providing stiffness on par with bone<sup>4</sup>

## REGATTA PLATE

- 1-, 2-, and 4-screw plate options
- 5.5 & 6.0mm variable angle screws in multiple lengths (35–65mm)
- Threaded and Plate Locking Cover options
- Instrumentation allows for pre-assembled and in situ assembly

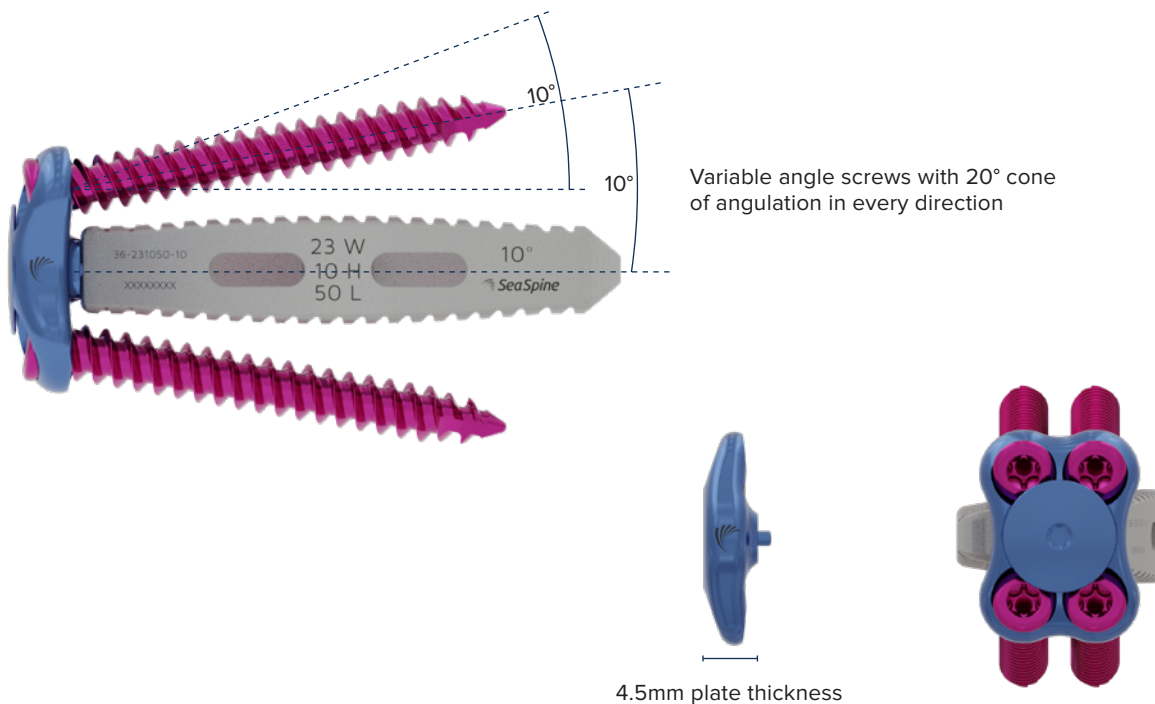


### Regatta Plate TruProfile® Construct

Offering 1-, 2-, or 4-screw lateral fixation when utilizing the Lateral Plate, Regatta Interbody, screws, and Lateral Plate Locking Cover.

### Lateral Plate Construct

2- and 4-screw plate options may be used independently of the Regatta Interbody. 1-screw plate must be used with supplemental fixation.



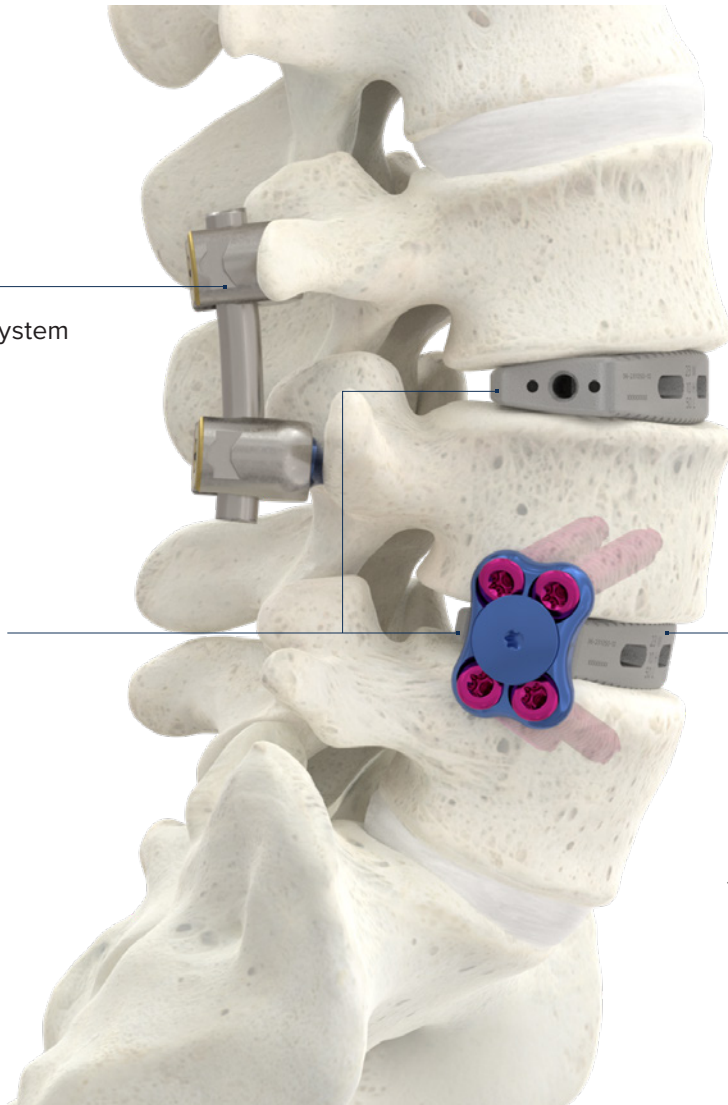
# PROCEDURAL SOLUTIONS

DIFFERENTIATED AND COMPLEMENTARY TECHNOLOGIES

**Mariner<sup>®</sup>**

Posterior Fixation System

**REGATTA<sup>®</sup>**



**OsteoStrand<sup>®</sup> Plus**

100% Demineralized Bone Fibers  
with Accell<sup>®</sup> Bone Matrix

<sup>1</sup>Results from imaging study. Data on file. TR-0010-11-01

<sup>2</sup>Walsh, et al. The in vivo response to a novel Ti coating compared with polyether ether ketone: evaluation of the periphery and inner surfaces of an implant. Spine Journal 2018 Jul; 18(7): 1231-1240

<sup>3</sup>NanoMetalene SEM images on file. TR-0094-19-01

<sup>4</sup>Results from mechanical testing. Data on file. TR-0010-11-01

For more information or to place an order, please contact:  
TEL 866.942.8698 | FAX 877.558.6227  
customerservice@seaspine.com | [seaspine.com](http://seaspine.com)

**SeaSpine Orthopedics Corporation**  
5770 Armada Drive  
Carlsbad, CA 92008 USA  
TEL 760.727.8399 USA | FAX 760.727.8809



**Outside USA**

TEL +1.760.727.8399 | FAX +1.760.727.8809  
INTERNATIONAL INQUIRIES [intlcustomer@seaspine.com](mailto:intlcustomer@seaspine.com)  
ALL OTHER INQUIRIES [customerservice@seaspine.com](mailto:customerservice@seaspine.com)

Warning: Applicable laws restrict these products to sale by or on the order of a physician. SeaSpine, the SeaSpine logo, Accell, Mariner, NanoMetalene, OsteoStrand, Regatta and TruProfile are registered trademarks of SeaSpine Orthopedics Corporation or its subsidiaries in the United States and/or other countries. ©2022 SeaSpine Orthopedics Corporation. All rights reserved. D0001741C 01