



# OSTEOCOVE™

STRIP AND PUTTY | ADVANCED BIOACTIVE SYNTHETIC  
SALES BROCHURE

## ACTIVATE BONE FORMATION

**OsteoCove™** is an advanced bioactive synthetic graft featuring a biphasic ceramic granule. The biphasic granule, a pairing of  $\beta$ -tricalcium phosphate ( $\beta$ -TCP) and hydroxyapatite (HA), promotes bone formation through engineered surface microporosity. The unique topography of OsteoCove elicits a bone forming response, as evidenced by its ability to grow bone in the challenging sheep muscle pouch model.\*

## THE SCIENCE IS IN THE SURFACE





# SUPERIOR HANDLING

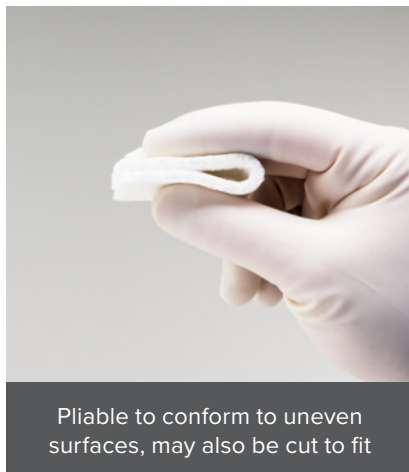
THE OPTIMAL COMBINATION OF SCIENCE AND TECHNOLOGY

## OSTEOCOVE™ STRIP

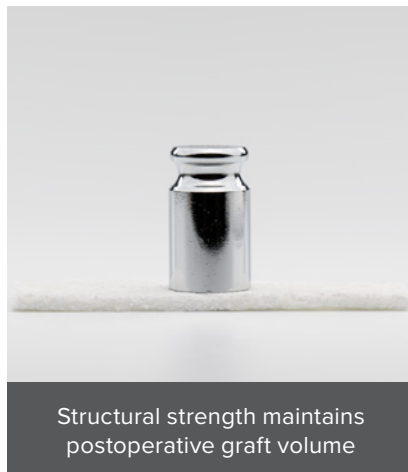
OsteoCove Strip contains the biphasic ceramic granule along with type-I collagen derived from bovine flexor tendon. The crosslinked technology of the type-I collagen stimulates cell attachment while providing superior handling and compression resistance.



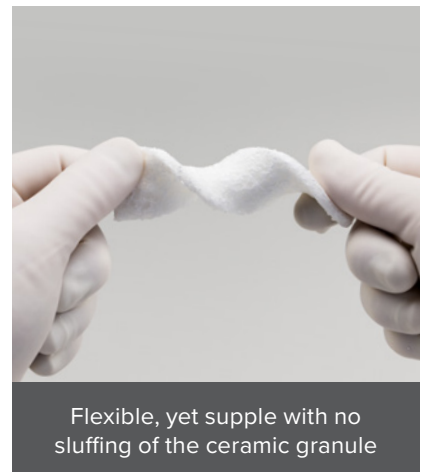
OsteoCove Strip with autograft



Pliable to conform to uneven surfaces, may also be cut to fit



Structural strength maintains postoperative graft volume



Flexible, yet supple with no sluffing of the ceramic granule

## OSTEOCOVE™ PUTTY

OsteoCove Putty contains the biphasic ceramic granule with type-I bovine collagen and a unique Reverse Phase Medium (RPM) carrier. The type-I collagen enhances handling while the RPM carrier is designed to be flowable at room temperature and more viscous at body temperature for intraoperative flexibility with irrigation resistance.



OsteoCove Putty



Flowable when used with  
RAPID® graft delivery system



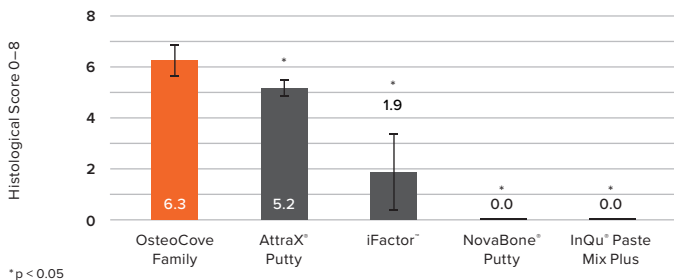
Moldable to pack into any  
size or shape defect



Highly malleable when  
mixed with autograft

# OSTEOCOVE™ OUTPERFORMS COMPETITORS\*

Performance in Sheep Intramuscular (IM) Pouch Model



## Study Results

Histological results demonstrate OsteoCove™ family (putty and strip) outperform competitors in the challenging sheep IM model. Data was assessed at the 12-week time point by two blinded, independent reviewers scoring on a scale of 0–8. A score of 0 indicates no bone present, where an 8 indicates bone remodeling with extensive bone marrow formation.

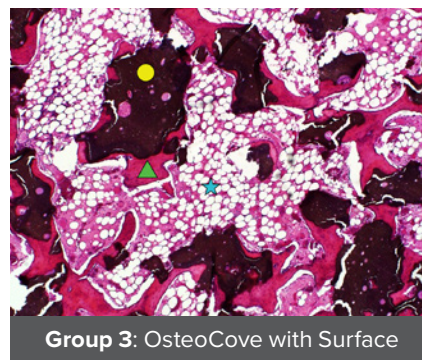
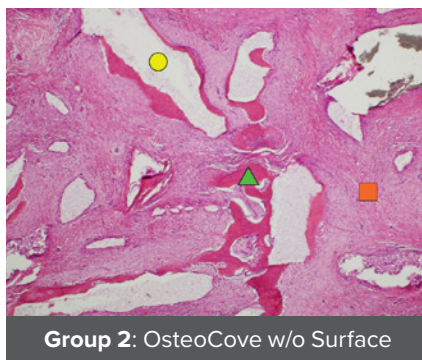
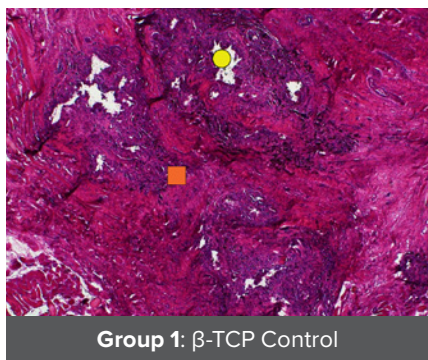
## EVIDENCE THAT SURFACE DRIVES BONE FORMATION

Histology images compare the results of three groups 12 weeks post implantation to show the effects of surface topography.

**Group 1** Negative Control:  $\beta$ -TCP shows no bone formation

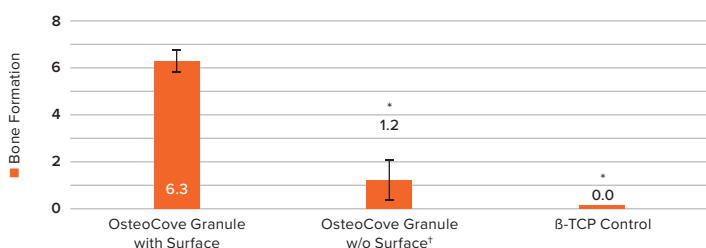
**Group 2** OsteoCove biphasic granule without surface topography: Shows minimal bone formation

**Group 3** OsteoCove biphasic granule with surface topography: Shows robust bone formation with extensive mature bone and bone marrow throughout



▲ Bone    ★ Bone Marrow    ■ Soft Tissue    ● Graft Material

Bone Formation Increases with OsteoCove Surface Topography



† "OsteoCove Granule without surface" is defined as a material with the same chemical and macrostructural properties as OsteoCove, but without the microporous surface features.

## Study Results

Bone formation is quantified using the same 0–8 scoring method as in the above competitive study. OsteoCove Granule with surface results in 80% more bone formation than OsteoCove Granule without surface, demonstrating the significance of surface topography in robust bone formation. The  $\beta$ -TCP Control exhibited no new bone growth indicating that other factors including chemistry play an important role in bone formation.

# OSTEOCOVE™

STRIP AND PUTTY | ADVANCED BIOACTIVE SYNTHETIC

## ORDERING INFORMATION



### Strip

Part Number	Description	Dimensions	Size
56930050	OsteoCove Strip	50 x 25 x 4mm	5cc
56930100	OsteoCove Strip	100 x 25 x 4mm	10cc
56930150	OsteoCove Strip	100 x 25 x 6mm	15cc
56930300	OsteoCove Strip	288 x 25 x 4mm	30cc

### Putty

Part Number	Description	Size
56920013	OsteoCove Putty	1.25cc
56920025	OsteoCove Putty	2.5cc
56920050	OsteoCove Putty	5cc
56920100	OsteoCove Putty	10cc

## HYDRATION GUIDE VIDEOS

Learn the best practices of OsteoCove Strip and Putty hydration. Refer to the Hydration Instructions in the IFU for detailed steps.



### Strip Hydration Video

<https://vimeo.com/manage/videos/838463472/cf822fc2fb>



### Putty Hydration Video

<https://vimeo.com/manage/videos/838459795/7d6aed0270>

\*Data on file.

For more information or to place an order, please contact:  
TEL 866.942.8698 | FAX 877.558.6227  
customerservice@seaspine.com | [seaspine.com](https://www.seaspine.com)

#### Outside USA

TEL + 1.866.727.8399, Option 1 | FAX + 1.760.727.8809  
INTERNATIONAL INQUIRIES [Irvine.CustomerService@seaspine.com](mailto:Irvine.CustomerService@seaspine.com)

**IsoTis Orthobiologics, Inc.**  
2 Goodyear, Irvine CA 92618  
TEL 800.550.7155 | FAX 800.471.3248  
IsoTis Orthobiologics, Inc. is a member  
of the SeaSpine Orthopedics Corporation  
family of companies. Made in the USA



Warning: Applicable laws restrict these products to sale by or on the order of a physician. SeaSpine, Orthofix, their respective logos, OsteoCove, and RAPID are trademarks or registered trademarks of Orthofix Medical Inc. and/or its affiliate companies. AttraX, iFactor, NovaBone, InQu, and any other third-party trademarks, service marks, or trade names are the property of their respective owners. Use or display of these third-party trademarks, service marks, or trade names in this document, is not intended to and does not imply any relationship with, or endorsements or sponsorship of these marks by us. © SeaSpine Orthopedics Corporation. 10/2023. All rights reserved. D0006051C 03