



MARINER[®] MIDLINE

POSTERIOR FIXATION SYSTEM
SALES BROCHURE

DESIGN RATIONALE

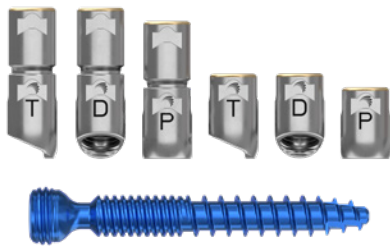
The **SeaSpine® Mariner® Midline system** expands the versatility of the Mariner fixation platform to enable a less invasive midline cortical procedure. This system combines procedure specific implants and instrumentation with the strength of Mariner modular technology to address a wide range of spinal pathologies.

Streamlined midline design featuring versatile fixation options:

- Unique implant thread form designed to optimize biomechanical performance
- Thread-on modular technology for *in situ* head deployment and optimum strength
- Multiple tulip options for polyaxial and motion-limiting configurations
- Anatomically designed constrained rod for zero overhang and precise rod approximation
- Extensive implant diameter and length options for patient-specific anatomical fit
- Designed with a true midline access retractor and intelligently streamlined tray layout for more efficient procedural workflow

Procedurally integrated solution:

SeaSpine combines the comprehensive Mariner Midline system with a wide range of complementary fixation and interbody options and market-leading orthobiologics to provide a best-in-class midline procedural solution.



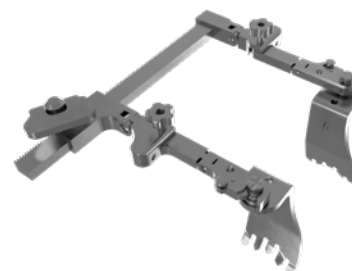
Mariner Midline modular tulip options



Vu a-POD® Prime NanoMetalene® Interbody



RAPID® Graft Delivery System and OsteoStrand®



True Midline access retractor

MARINER® MIDLINE

POSTERIOR FIXATION SYSTEM

THE SYSTEM

1. Mariner® Modular Threaded Technology

Superior tulip connection compatible with polyaxial, favored angle, and extended tab implants

2. Mariner shank design includes cortico-cancellous shank thread form featuring dual core technology for optimum fixation and bony interface

3. Constrained feature allows for minimal rod overhang and reduced instance of superior facet impingement

4. Robust retractor body with anatomically designed blades and toeing capabilities to maximize visualization with minimal incision length and exposure



FIG. 1



FIG. 2



FIG. 3



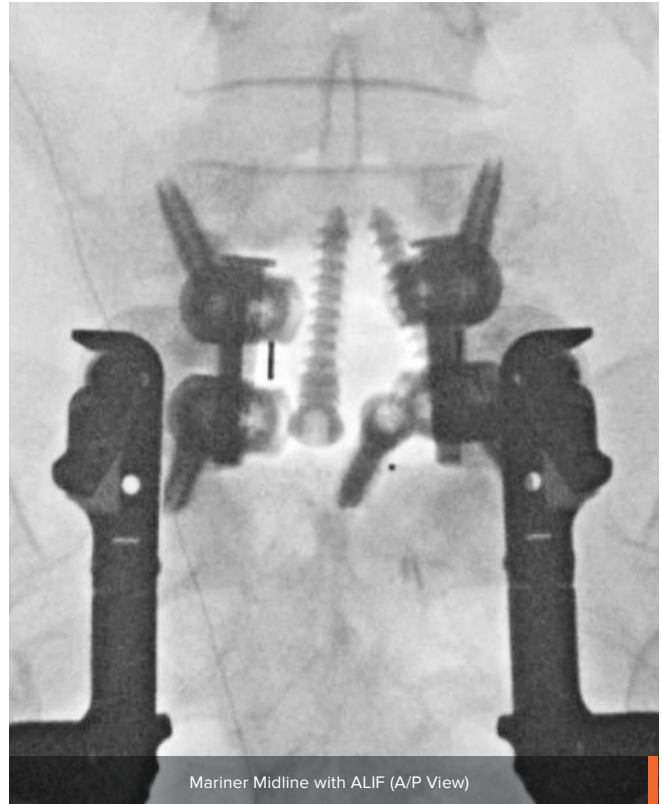
FIG. 4

MARINER® MIDLINE

POSTERIOR FIXATION SYSTEM



Mariner® Midline with ALIF (Lateral View)



Mariner Midline with ALIF (A/P View)

Patient Profile

PATIENT AGE: 20-30 yrs


PATIENT GENDER: Male

BMI: 25

PATHOLOGY: L5-S1 congenital pars defect and spondylolisthesis

PROCEDURE: L5-S1 Mariner Midline posterior fixation with ALIF

For more information or to place an order, please contact:
TEL 866.942.8698 | FAX 877.558.6227
customerservice@seaspine.com | seaspine.com

 **SeaSpine Orthopedics Corporation**
5770 Armada Drive
Carlsbad, CA 92008 USA
TEL 760.727.8399 USA | FAX 760.727.8809



Outside USA

TEL +1.760.727.8399 | FAX +1.760.727.8809
INTERNATIONAL INQUIRIES intlcustomer@seaspine.com
ALL OTHER INQUIRIES customerservice@seaspine.com

Warning: Applicable laws restrict these products to sale by or on the order of a physician. SeaSpine, the SeaSpine logo, Mariner, NanoMetalene-RAPID, OsteoStrand, and Vu a•POD Prime are registered trademarks of SeaSpine Orthopedics Corporation or its subsidiaries in the United States and/or other countries. ©2020 SeaSpine Orthopedics Corporation. All rights reserved. Printed in USA. D0003050B 01