

FATHOM™ PEDICLE-BASED RETRACTOR

MIS TLIF PROCEDURAL SOLUTION
SALES BROCHURE

The **SeaSpine® Fathom™ Pedicle-Based Retractor** is designed to provide a rigid *in situ* construct that is specific to each patient. With three points of active telescoping blade fixation, the Fathom Retractor allows the surgeon to control the precise length of each blade and dial in a customized lateral to medial tilt. Fathom provides for a reproducible surgical workflow and enhanced visualization with minimal soft tissue disruption, complementing SeaSpine's complete TLIF Procedural Solution.

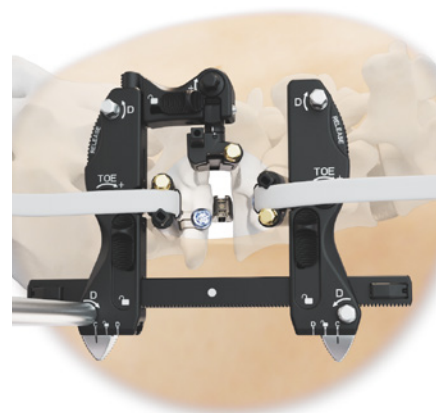
SYSTEM HIGHLIGHTS



Procedural Versatility



Customized Retractor Tilt



Clear Intraoperative Visualization



7D Compatible Navigated Shank Driver



Telescoping C/C Blades 35–140mm



Telescoping Medial Blades 35–115mm

FATHOM™ PEDICLE-BASED RETRACTOR

MIS TLIF PROCEDURAL SOLUTION

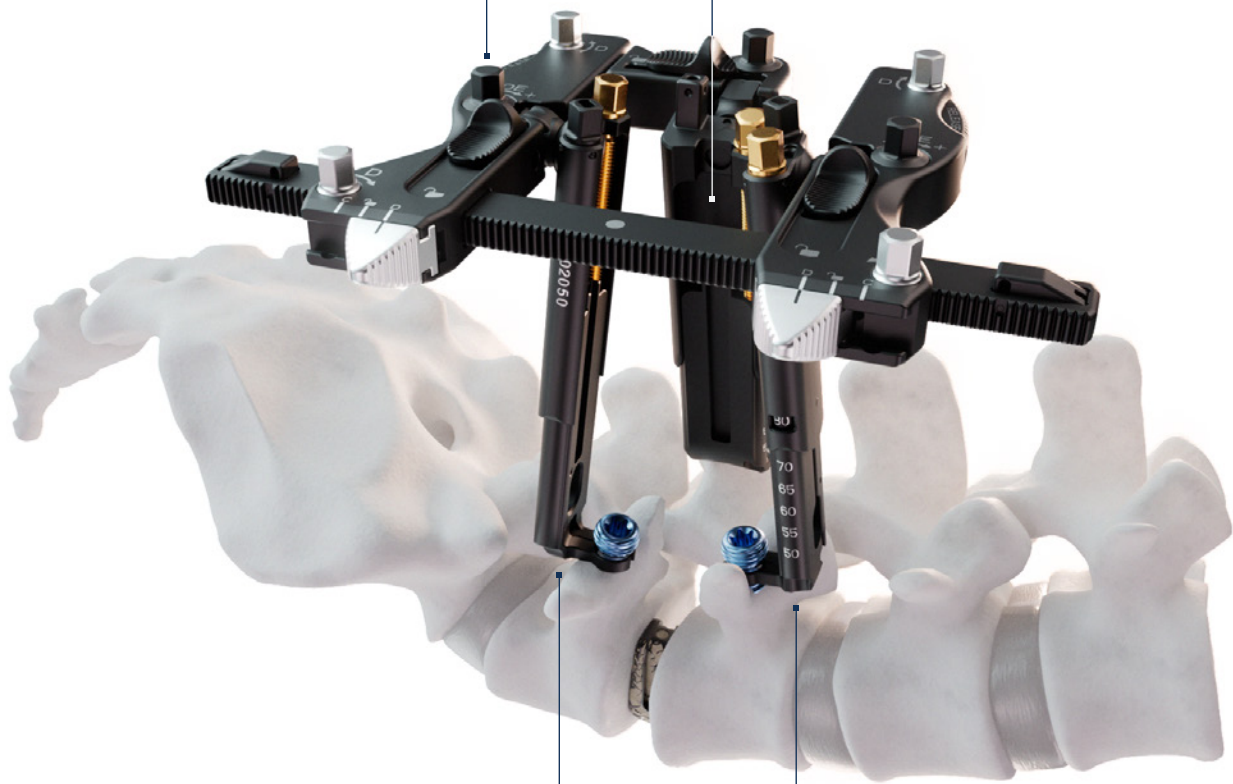
SYSTEM FEATURES

Frame Stability

Three points of fixation to achieve and maintain retractor rigidity and desired intraoperative visibility

Medial Blades

Active toeing, distraction, cranial/caudal sweep, and telescoping capabilities to achieve medial retraction and customized lateral to medial retractor tilt



Cranial/Caudal Blades

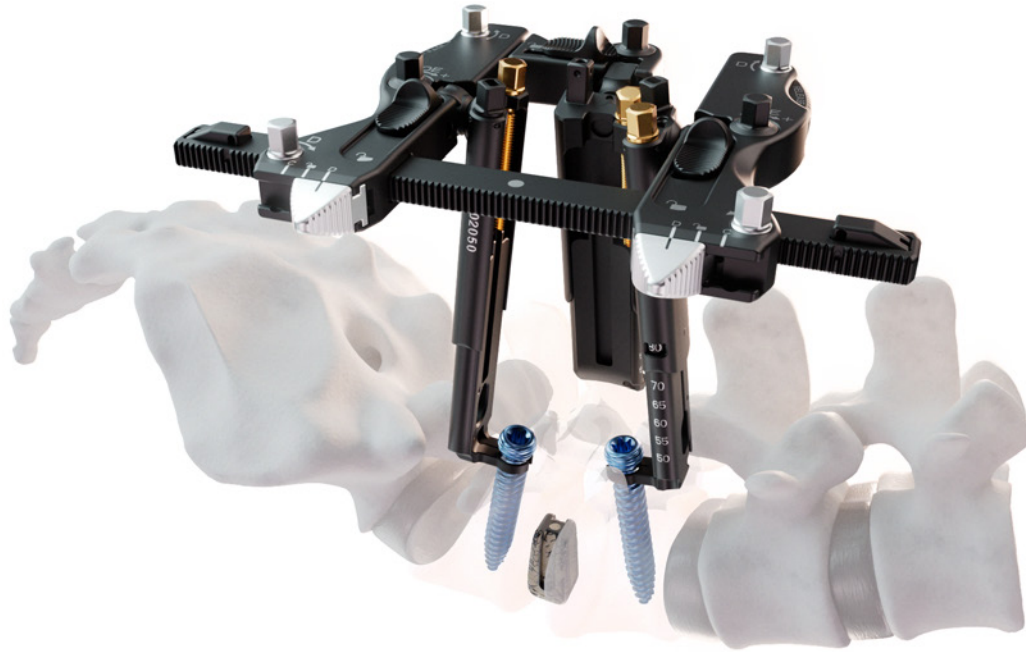
Active toeing, distraction, and telescoping capabilities allow *in situ* depth and retraction control for a patient-specific fit

PROCEDURAL SOLUTIONS

DIFFERENTIATED AND COMPLEMENTARY TECHNOLOGIES

FATHOM™ PEDICLE-BASED RETRACTOR

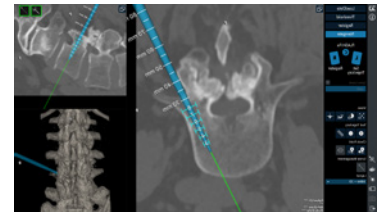
MIS TLIF Procedural Solution



Mariner® MIS
Posterior Fixation System



WaveForm® TO
Posterior Interbody System



FLASH® Navigation
with 7D Technology

Low-radiation, Rapid
Intraoperative Visibility

OsteoStrand® Plus
100% Demineralized Bone Fibers
with Accell® Bone Matrix

For more information or to place an order, please contact:
TEL 866.942.8698 | FAX 877.558.6227
customerservice@seaspine.com | seaspine.com

Outside USA
TEL +1.760.727.8399 | FAX +1.760.727.8809
INTERNATIONAL INQUIRIES intlcustomer@seaspine.com

SeaSpine Orthopedics Corporation
5770 Armada Drive
Carlsbad, CA 92008 USA
TEL 760.727.8399 USA | FAX 760.727.8809



Warning: Applicable laws restrict these products to sale by or on the order of a physician. SeaSpine, the SeaSpine logo, Accell, Mariner, OsteoStrand, and WaveForm are registered trademarks of SeaSpine Orthopedics Corporation or its subsidiaries in the United States and/or other countries. Fathom and FLASH are trademarks of SeaSpine Orthopedics Corporation or its subsidiaries in the United States and/or other countries. ©2023 SeaSpine Orthopedics Corporation. All rights reserved. D0006000A 07