

FORZA[®]
SPACER SYSTEM

Posterior & Transforaminal Lumbar Interbody Fusion

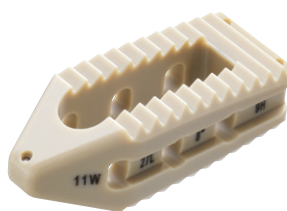


System Overview

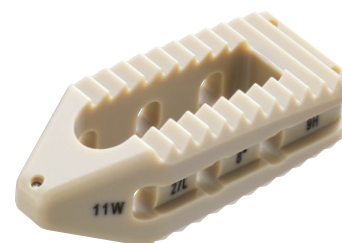
The FORZA™ Spacer System has been designed to help optimize Transforaminal Lumbar Interbody Fusion (TLIF) and Posterior Lumbar Interbody Fusion (PLIF) procedures with surgeon-designed implants and instruments.

Bullethead Spacers:

- Bulleted nose for assisting with distraction.
- Threaded connection to the Implant Inserter with grooves for a secure hold that is firm enough for an insert and rotate technique.
- Chamfered edges for easier rotation with the straight cage.
- Narrow double bullet nose on the straight cage regardless of the size to assist with distraction.
- Aggressive anti-migration ribs for resisting implant migration.
- Full height vertical tantalum markers 1mm from the ends for clear in-situ implant positioning.
- Provided sterile for inventory efficiency.



9mm Straight Spacer 0°



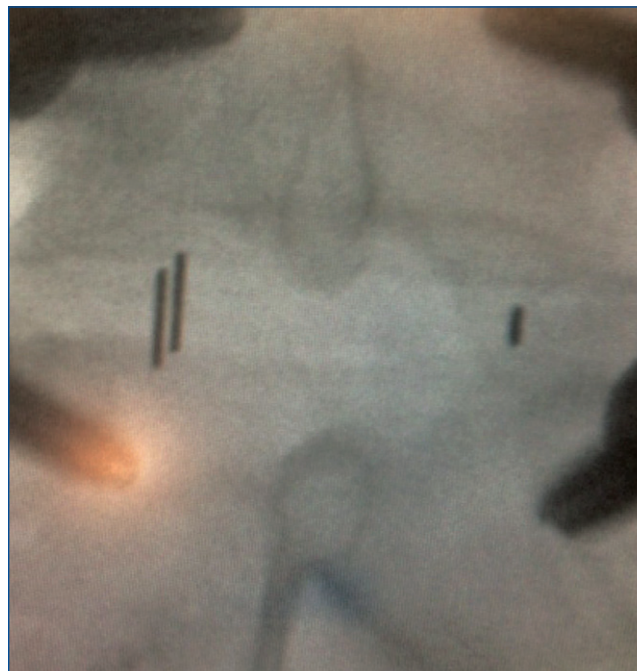
11mm Straight Spacer 8°



9mm Curved Spacer 0°

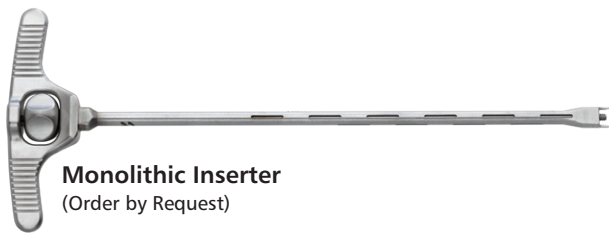


11mm Curved Spacer 8°



Streamlined Instrumentation:

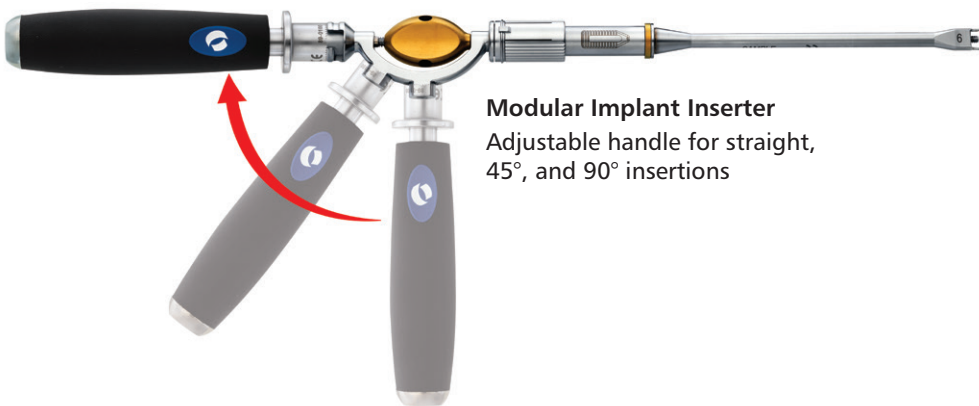
- Firm connection to the implant, even for an insert and rotate technique with the straight cage.
- All Inserters provide great visualization capability.
- Modular Implant Inserter with different handle angle locations to match surgeon preference.
- MIS Inserter for improved visualization in tight spaces.
- Monolithic implant trials for speed and efficiency.



Monolithic Inserter
(Order by Request)



MIS Inserter



Modular Implant Inserter
Adjustable handle for straight, 45°, and 90° insertions



Corner Tamp



Articulating Tamp



Curette



Straight Trial



Rotating Cutter



Paddle Distractor

Discectomy Set 89-0031

Part #	Description	Qty
Top Tray		
89-0300	Anatomic Rasp	1
89-0301	Flat Rasp	1
89-0303	Curved Rasp	1
89-0600	Nerve Root Retractor, 70°	1
89-0601	Nerve Root Retractor, 90°	1
89-0602	Malleable Nerve Root Retractor	1
89-0650	2mm Pituitary Rongeur - Straight Biting	1
89-0651	2mm Pituitary Rongeur - Up Biting	1
89-0652	4mm Pituitary Rongeur - Straight Biting	1
89-0653	4mm Pituitary Rongeur - Up Biting	1

Middle Tray

89-0372	#0 Curette Straight- Serrated	1
89-0373	#1 Curette Straight- Serrated	1
89-0376	#0 Curette Up- Serrated	1
89-0377	#1 Curette Up- Serrated	1
89-0380	#0 Curette Down- Serrated	1
89-0381	#1 Curette Down- Serrated	1
89-0385	#1 Curette Right- Serrated	1
89-0389	#1 Curette Left- Serrated	1
89-0390	Small Ring Curette - 6W x 10L	1
89-0391	Large Ring Curette - 10W x 10L	1

Bottom Tray

89-0250	6mm Paddle Distractor	1
89-0251	7mm Paddle Distractor	1
89-0252	8mm Paddle Distractor	1
89-0253	9mm Paddle Distractor	1
89-0254	10mm Paddle Distractor	1
89-0255	11mm Paddle Distractor	1
89-0256	12mm Paddle Distractor	1
89-0257	13mm Paddle Distractor	1
89-0258	14mm Paddle Distractor	1
89-0259	15mm Paddle Distractor	1
89-0260	16mm Paddle Distractor	1

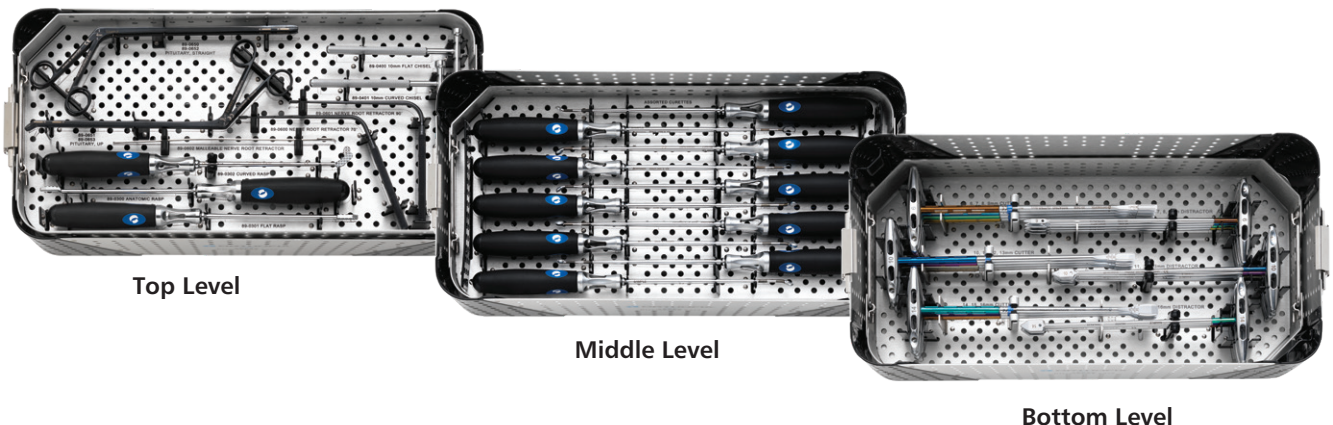
Part #	Description	Qty
89-0406	6mm Rotating Cutter	1
89-0407	7mm Rotating Cutter	1
89-0408	8mm Rotating Cutter	1
89-0409	9mm Rotating Cutter	1
89-0410	10mm Rotating Cutter	1
89-0411	11mm Rotating Cutter	1
89-0412	12mm Rotating Cutter	1
89-0413	13mm Rotating Cutter	1
89-0414	14mm Rotating Cutter	1
89-0415	15mm Rotating Cutter	1
89-0416	16mm Rotating Cutter	1

Discectomy Case

89-0092	Discectomy Case	
---------	-----------------	--

Order by Request - Discectomy Instruments

89-0351	#00 Curette Straight - Smooth
89-0353	#1 Curette Straight - Smooth
89-0355	#00 Curette Up - Smooth
89-0356	#0 Curette Up - Smooth
89-0357	#1 Curette Up - Smooth
89-0359	#00 Curette Down - Smooth
89-0360	#0 Curette Down - Smooth
89-0361	#1 Curette Down - Smooth
89-0364	#0 Curette Right - Smooth
89-0365	#1 Curette Right - Smooth
89-0368	#0 Curette Left - Smooth
89-0369	#1 Curette Left - Smooth
89-0342	#00 Curette 90° Down – Smooth
89-0343	#0 Curette 90° Down – Smooth
89-0344	#1 Curette 90° Down – Smooth
89-0346	#00 Curette 90° Down – Serrated
89-0347	#0 Curette 90° Down – Serrated
89-0348	#1 Curette 90° Down – Serrated



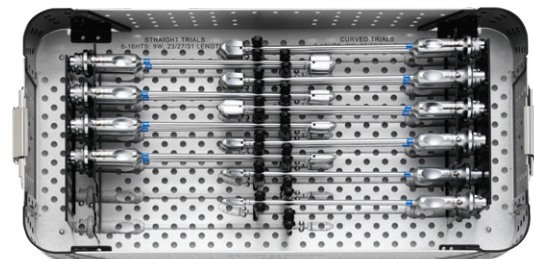
Instrument Set 89-0021

Part #	Description	Qty
Top Tray		
89-0100	Universal Handle	2
NA	9mm Straight Modular Implant Inserter (assembled)	
NA	11mm Straight Modular Implant Inserter (assembled)	
89-0113	Implant Inserter Body (C-Shaft) - (included within assembled Modular Implant Inserters)	2
89-0108	9mm Straight Implant Remover	1
89-0110	11mm Straight Implant Remover	1
89-0112	MIS Inserter	1
89-0114	9mm Straight Implant Shaft (1 is included within the assembled	2
89-0116	11mm Straight Implant Shaft	2
89-0117	9mm Curved Implant Shaft (1 is included within the assembled Modular Implant Inserter provided in the set)	2
89-0119	11mm Curved Implant Shaft	2
89-0120	Threaded Insert	6
89-0121	Impact Cap	1
89-0200	Slap Hammer	1
Bottom Tray		
89-0153	9mm Tamp	1
89-0155	11mm Tamp	1
89-0156	Corner (Y) Tamp	1
35-5001	Funnel	1
35-5002	Plunger	1
89-0500	Bone Packing Tool	Order By Request
89-0509	9mm Monolithic Straight Implant Inserter	Order By Request
89-0511	11mm Monolithic Straight Implant Inserter	Order By Request
89-0609	9mm Articulating Tamp	Order By Request
89-0611	11mm Articulating Tamp	Order By Request

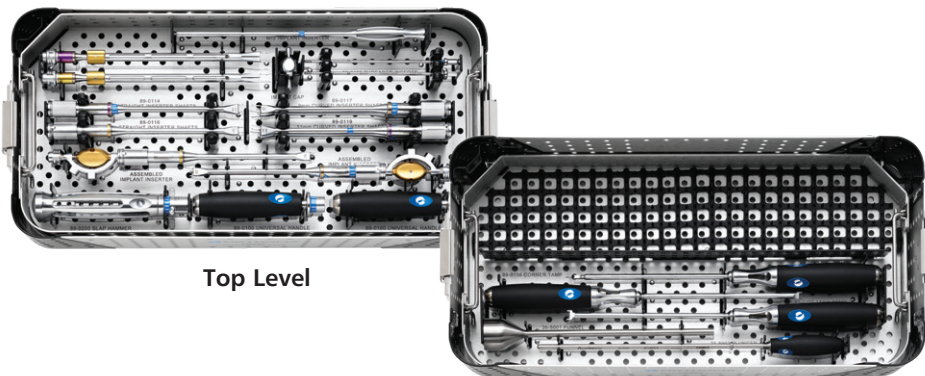
Instruments Case

89-0094	Instruments Case	1
---------	------------------	---

Part #	Description	Qty
Trial Set 89-0022 - Order By Request		
89-0093	Trial Case	1
89-0206	9W x 27L x 6H, 0° Straight Trial	1
89-0207	9W x 27L x 7H, 0° Straight Trial	1
89-0208	9W x 27L x 8H, 0° Straight Trial	1
89-0209	9W x 27L x 9H, 0° Straight Trial	1
89-0210	9W x 27L x 10H, 0° Straight Trial	1
89-0211	9W x 27L x 11H, 0° Straight Trial	1
89-0212	9W x 27L x 12H, 0° Straight Trial	1
89-0213	9W x 27L x 13H, 0° Straight Trial	1
89-0214	9W x 27L x 14H, 0° Straight Trial	1
89-0215	9W x 27L x 15H, 0° Straight Trial	1
89-0216	9W x 27L x 16H, 0° Straight Trial	1
89-0306	9W x 27L x 6H, 0° Curved Trial	1
89-0307	9W x 27L x 7H, 0° Curved Trial	1
89-0308	9W x 27L x 8H, 0° Curved Trial	1
89-0309	9W x 27L x 9H, 0° Curved Trial	1
89-0310	9W x 27L x 10H, 0° Curved Trial	1
89-0311	9W x 27L x 11H, 0° Curved Trial	1
89-0312	9W x 27L x 12H, 0° Curved Trial	1
89-0313	9W x 27L x 13H, 0° Curved Trial	1
89-0314	9W x 27L x 14H, 0° Curved Trial	1
89-0315	9W x 27L x 15H, 0° Curved Trial	1
89-0316	9W x 27L x 16H, 0° Curved Trial	1



One-Level



Top Level

Bottom Level

Straight Spacers

9mm x 23mm

89-1006SP	9W x 23L x 6, 0° Straight
89-1007SP	9W x 23L x 7, 0° Straight
89-1008SP	9W x 23L x 8, 0° Straight
89-1009SP	9W x 23L x 9, 0° Straight
89-1010SP	9W x 23L x 10, 0° Straight
89-1011SP	9W x 23L x 11, 0° Straight
89-1012SP	9W x 23L x 12, 0° Straight
89-1013SP	9W x 23L x 13, 0° Straight
89-1014SP	9W x 23L x 14, 0° Straight
89-1015SP	9W x 23L x 15, 0° Straight
89-1016SP	9W x 23L x 16, 0° Straight
89-7008SP	9W x 23L x 8, 8° Straight
89-7009SP	9W x 23L x 9, 8° Straight
89-7010SP	9W x 23L x 10, 8° Straight
89-7011SP	9W x 23L x 11, 8° Straight
89-7012SP	9W x 23L x 12, 8° Straight
89-7013SP	9W x 23L x 13, 8° Straight
89-7014SP	9W x 23L x 14, 8° Straight
89-7015SP	9W x 23L x 15, 8° Straight
89-7016SP	9W x 23L x 16, 8° Straight

9mm x 27mm

89-3006SP	9W x 27L x 6, 0° Straight
89-3007SP	9W x 27L x 7, 0° Straight
89-3008SP	9W x 27L x 8, 0° Straight
89-3009SP	9W x 27L x 9, 0° Straight
89-3010SP	9W x 27L x 10, 0° Straight
89-3011SP	9W x 27L x 11, 0° Straight
89-3012SP	9W x 27L x 12, 0° Straight
89-3013SP	9W x 27L x 13, 0° Straight
89-3014SP	9W x 27L x 14, 0° Straight
89-3015SP	9W x 27L x 15, 0° Straight
89-3016SP	9W x 27L x 16, 0° Straight
89-9009SP	9W x 27L x 9, 8° Straight
89-9010SP	9W x 27L x 10, 8° Straight
89-9011SP	9W x 27L x 11, 8° Straight
89-9012SP	9W x 27L x 12, 8° Straight
89-9013SP	9W x 27L x 13, 8° Straight
89-9014SP	9W x 27L x 14, 8° Straight
89-9015SP	9W x 27L x 15, 8° Straight
89-9016SP	9W x 27L x 16, 8° Straight

11mm x 23mm

89-2006SP	11W x 23L x 6, 0° Straight
89-2007SP	11W x 23L x 7, 0° Straight
89-2008SP	11W x 23L x 8, 0° Straight
89-2009SP	11W x 23L x 9, 0° Straight
89-2010SP	11W x 23L x 10, 0° Straight
89-2011SP	11W x 23L x 11, 0° Straight
89-2012SP	11W x 23L x 12, 0° Straight
89-2013SP	11W x 23L x 13, 0° Straight
89-2014SP	11W x 23L x 14, 0° Straight
89-2015SP	11W x 23L x 15, 0° Straight
89-2016SP	11W x 23L x 16, 0° Straight
89-8008SP	11W x 23L x 8, 8° Straight
89-8009SP	11W x 23L x 9, 8° Straight
89-8010SP	11W x 23L x 10, 8° Straight
89-8011SP	11W x 23L x 11, 8° Straight
89-8012SP	11W x 23L x 12, 8° Straight
89-8013SP	11W x 23L x 13, 8° Straight
89-8014SP	11W x 23L x 14, 8° Straight
89-8015SP	11W x 23L x 15, 8° Straight
89-8016SP	11W x 23L x 16, 8° Straight

11mm x 27mm

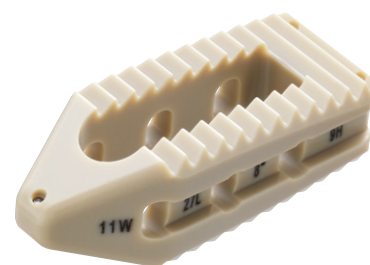
89-4006SP	11W x 27L x 6, 0° Straight
89-4007SP	11W x 27L x 7, 0° Straight
89-4008SP	11W x 27L x 8, 0° Straight
89-4009SP	11W x 27L x 9, 0° Straight
89-4010SP	11W x 27L x 10, 0° Straight
89-4011SP	11W x 27L x 11, 0° Straight
89-4012SP	11W x 27L x 12, 0° Straight
89-4013SP	11W x 27L x 13, 0° Straight
89-4014SP	11W x 27L x 14, 0° Straight
89-4015SP	11W x 27L x 15, 0° Straight
89-4016SP	11W x 27L x 16, 0° Straight
89-1209SP	11W x 27L x 9, 8° Straight
89-1210SP	11W x 27L x 10, 8° Straight
89-1211SP	11W x 27L x 11, 8° Straight
89-1212SP	11W x 27L x 12, 8° Straight
89-1213SP	11W x 27L x 13, 8° Straight
89-1214SP	11W x 27L x 14, 8° Straight
89-1215SP	11W x 27L x 15, 8° Straight
89-1216SP	11W x 27L x 16, 8° Straight

11mm x 31mm

89-6006SP	11W x 31L x 6, 0° Straight
89-6007SP	11W x 31L x 7, 0° Straight
89-6008SP	11W x 31L x 8, 0° Straight
89-6009SP	11W x 31L x 9, 0° Straight
89-6010SP	11W x 31L x 10, 0° Straight
89-6011SP	11W x 31L x 11, 0° Straight
89-6012SP	11W x 31L x 12, 0° Straight
89-6013SP	11W x 31L x 13, 0° Straight
89-6014SP	11W x 31L x 14, 0° Straight
89-6015SP	11W x 31L x 15, 0° Straight
89-6016SP	11W x 31L x 16, 0° Straight
89-1409SP	11W x 31L x 9, 8° Straight
89-1410SP	11W x 31L x 10, 8° Straight
89-1411SP	11W x 31L x 11, 8° Straight
89-1412SP	11W x 31L x 12, 8° Straight
89-1413SP	11W x 31L x 13, 8° Straight
89-1414SP	11W x 31L x 14, 8° Straight
89-1415SP	11W x 31L x 15, 8° Straight
89-1416SP	11W x 31L x 16, 8° Straight

11mm x 33mm

88-2006SP	11W x 33L x 6H, 0° Straight
88-2007SP	11W x 33L x 7H, 0° Straight
88-2008SP	11W x 33L x 8H, 0° Straight
88-2009SP	11W x 33L x 9H, 0° Straight
88-2010SP	11W x 33L x 10H, 0° Straight
88-2011SP	11W x 33L x 11H, 0° Straight
88-2012SP	11W x 33L x 12H, 0° Straight
88-2013SP	11W x 33L x 13H, 0° Straight
88-2014SP	11W x 33L x 14H, 0° Straight
88-2015SP	11W x 33L x 15H, 0° Straight
88-2016SP	11W x 33L x 16H, 0° Straight



9mm Straight Spacer 0°

Curved Spacers

9mm x 27mm

89-1706SP	9W x 27L x 6H, 0° Curved
89-1707SP	9W x 27L x 7H, 0° Curved
89-1708SP	9W x 27L x 8H, 0° Curved
89-1709SP	9W x 27L x 9H, 0° Curved
89-1710SP	9W x 27L x 10H, 0° Curved
89-1711SP	9W x 27L x 11H, 0° Curved
89-1712SP	9W x 27L x 12H, 0° Curved
89-1713SP	9W x 27L x 13H, 0° Curved
89-1714SP	9W x 27L x 14H, 0° Curved
89-1715SP	9W x 27L x 15H, 0° Curved
89-1716SP	9W x 27L x 16H, 0° Curved
89-4508SP	9W x 27L x 8H, 8° Curved
89-4509SP	9W x 27L x 9H, 8° Curved
89-4510SP	9W x 27L x 10H, 8° Curved
89-4511SP	9W x 27L x 11H, 8° Curved
89-4512SP	9W x 27L x 12H, 8° Curved
89-4513SP	9W x 27L x 13H, 8° Curved
89-4514SP	9W x 27L x 14H, 8° Curved
89-4515SP	9W x 27L x 15H, 8° Curved
89-4516SP	9W x 27L x 16H, 8° Curved

9mm X 31mm

89-1906SP	9W x 31L x 6H, 0° Curved
89-1907SP	9W x 31L x 7H, 0° Curved
89-1908SP	9W x 31L x 8H, 0° Curved
89-1909SP	9W x 31L x 9H, 0° Curved
89-1910SP	9W x 31L x 10H, 0° Curved
89-1911SP	9W x 31L x 11H, 0° Curved
89-1912SP	9W x 31L x 12H, 0° Curved
89-1913SP	9W x 31L x 13H, 0° Curved
89-1914SP	9W x 31L x 14H, 0° Curved
89-1915SP	9W x 31L x 15H, 0° Curved
89-1916SP	9W x 31L x 16H, 0° Curved
89-4708SP	9W x 31L x 8H, 8° Curved
89-4709SP	9W x 31L x 9H, 8° Curved
89-4710SP	9W x 31L x 10H, 8° Curved
89-4711SP	9W x 31L x 11H, 8° Curved
89-4712SP	9W x 31L x 12H, 8° Curved
89-4713SP	9W x 31L x 13H, 8° Curved
89-4714SP	9W x 31L x 14H, 8° Curved
89-4715SP	9W x 31L x 15H, 8° Curved
89-4716SP	9W x 31L x 16H, 8° Curved

11mm x 27mm

89-1806SP	11W x 27L x 6H, 0° Curved
89-1807SP	11W x 27L x 7H, 0° Curved
89-1808SP	11W x 27L x 8H, 0° Curved
89-1809SP	11W x 27L x 9H, 0° Curved
89-1810SP	11W x 27L x 10H, 0° Curved
89-1811SP	11W x 27L x 11H, 0° Curved
89-1812SP	11W x 27L x 12H, 0° Curved
89-1813SP	11W x 27L x 13H, 0° Curved
89-1814SP	11W x 27L x 14H, 0° Curved
89-1815SP	11W x 27L x 15H, 0° Curved
89-1816SP	11W x 27L x 16H, 0° Curved
89-4608SP	11W x 27L x 8H, 8° Curved
89-4609SP	11W x 27L x 9H, 8° Curved
89-4610SP	11W x 27L x 10H, 8° Curved
89-4611SP	11W x 27L x 11H, 8° Curved
89-4612SP	11W x 27L x 12H, 8° Curved
89-4613SP	11W x 27L x 13H, 8° Curved
89-4614SP	11W x 27L x 14H, 8° Curved
89-4615SP	11W x 27L x 15H, 8° Curved
89-4616SP	11W x 27L x 16H, 8° Curved

11mm X 31mm

89-4206SP	11W x 31L x 6H, 0° Curved
89-4207SP	11W x 31L x 7H, 0° Curved
89-4208SP	11W x 31L x 8H, 0° Curved
89-4209SP	11W x 31L x 9H, 0° Curved
89-4210SP	11W x 31L x 10H, 0° Curved
89-4211SP	11W x 31L x 11H, 0° Curved
89-4212SP	11W x 31L x 12H, 0° Curved
89-4213SP	11W x 31L x 13H, 0° Curved
89-4214SP	11W x 31L x 14H, 0° Curved
89-4215SP	11W x 31L x 15H, 0° Curved
89-4216SP	11W x 31L x 16H, 0° Curved
89-4808SP	11W x 31L x 8H, 8° Curved
89-4809SP	11W x 31L x 9H, 8° Curved
89-4810SP	11W x 31L x 10H, 8° Curved
89-4811SP	11W x 31L x 11H, 8° Curved
89-4812SP	11W x 31L x 12H, 8° Curved
89-4813SP	11W x 31L x 13H, 8° Curved
89-4814SP	11W x 31L x 14H, 8° Curved
89-4815SP	11W x 31L x 15H, 8° Curved
89-4816SP	11W x 31L x 16H, 8° Curved



9mm Curved Spacer 0°

Please visit Orthofix.com/IFU for full information on indications for use, contraindications, warnings, precautions, adverse reactions and sterilization.

Caution: Federal law (USA) restricts this device to sale by or on the order of a physician. Proper surgical procedure is the responsibility of the medical professional. Operative techniques are furnished as an informative guideline. Each surgeon must evaluate the appropriateness of a technique based on his or her personal medical credentials and experience.



Orthofix
3451 Plano Parkway
Lewisville, Texas 75056-9453 USA
1.214.937.3199
1.888.298.5700
www.orthofix.com



Medical Device Safety Services (MDSS):
Schiffgraben 41
30175, Hannover
Germany
+49 511 6262 8630
www.mdss.com

Rx Only
CE 2797

Orthofix products or services referenced herein are trademarks or registered trademarks of Orthofix Medical Inc. and its group of companies. Any rights not expressly granted herein are reserved.