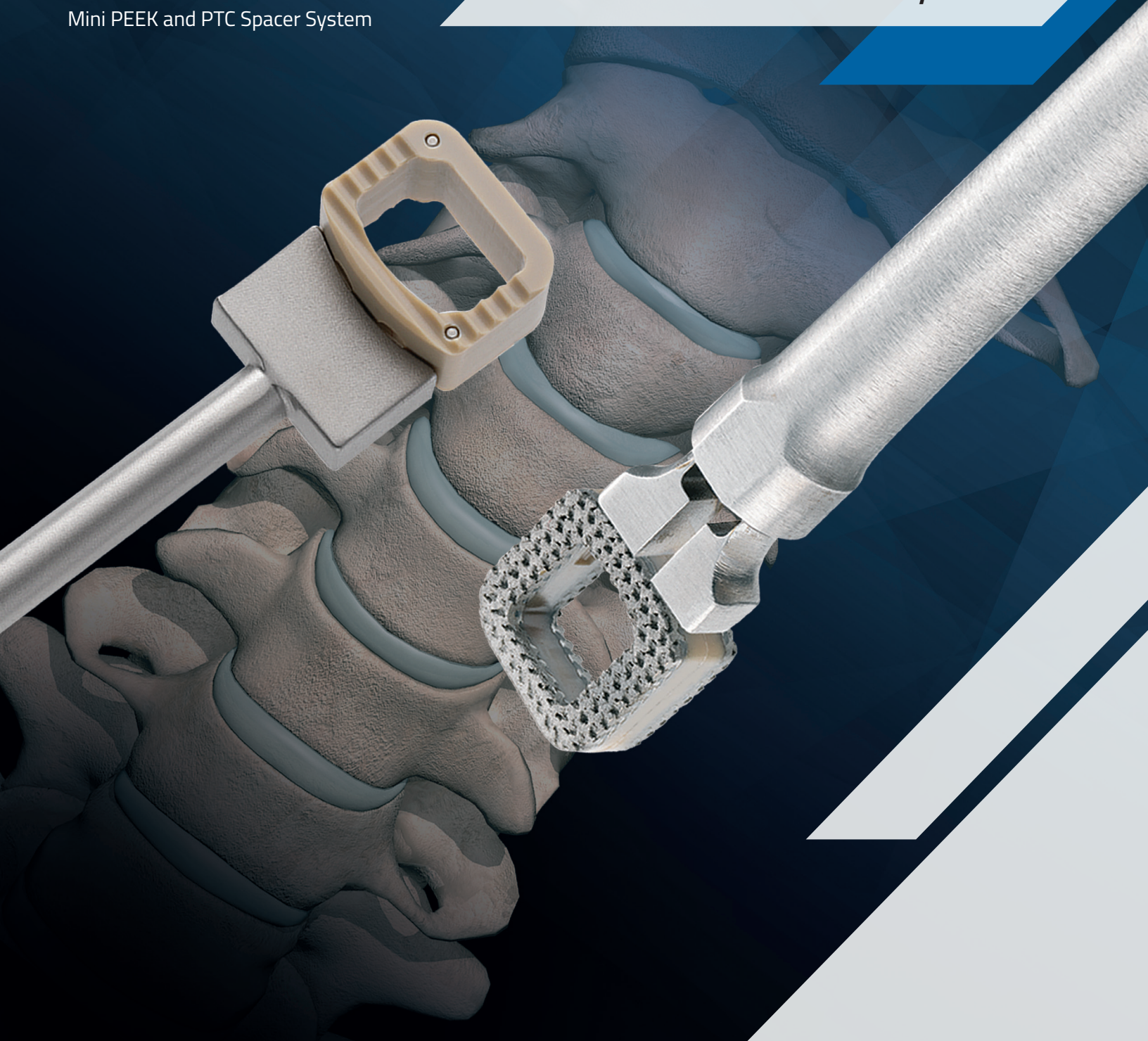


CONSTRUX[®]

Mini PEEK and PTC Spacer System

Anterior Cervical Discectomy Fusion



Simple yet comprehensive, reliable and amazingly versatile

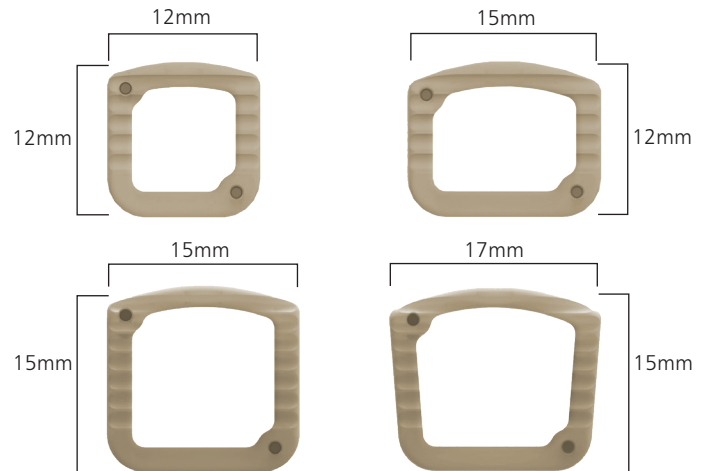
CONSTRUX Mini PEEK offers implant options with heights ranging from 5mm to 12mm as a cervical interbody. Its large graft window promotes fusion potential while its four footprint designs and lordotic angles cater to a broad range of patient anatomy. Aggressive anti-migration ribs grip the endplates and four titanium markers enhance intraoperative visibility.

Competitive Design Advantages

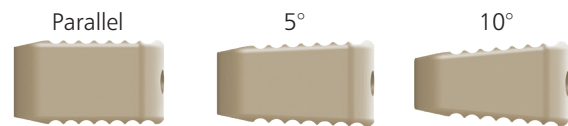
- Radiolucent implant with titanium markers for intraoperative visibility
- Anti-migration ribs for secure placement
- Large center opening for packing bone grafting material
- Multiple implant options enable various surgical solutions
- Straightforward instrumentation for easy implantation

Four Footprints

- 12mm x 12mm
- 15mm x 12mm
- 15mm x 15mm
- 17mm x 15mm



Three Profiles



AP Fluoroscopy with Construx Mini PEEK



Lateral Fluoroscopy with Construx Mini PEEK

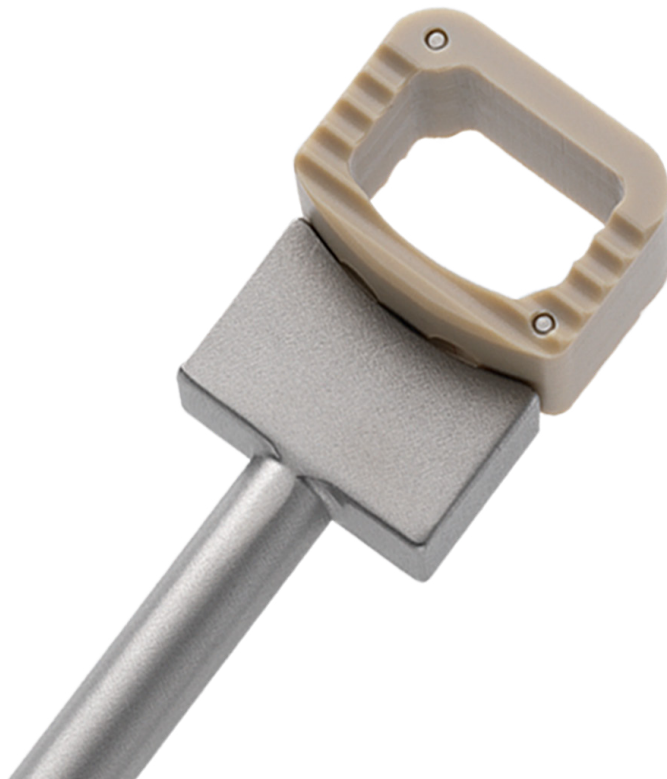
CONSTRUX Mini PEEK Implants

12mm x 12mm Parallel Implants

| Sterile Part # | Non-Sterile Part # | Description | Graft Vol. (cc) |
|----------------|--------------------|------------------------------------|-----------------|
| 47-3105SP | 47-3105C | 12mm W x 12mm L, Parallel - 5mm H | 0.31 |
| 47-3106SP | 47-3106C | 12mm W x 12mm L, Parallel- 6mm H | 0.37 |
| 47-3107SP | 47-3107C | 12mm W x 12mm L, Parallel - 7mm H | 0.43 |
| 47-3108SP | 47-3108C | 12mm W x 12mm L, Parallel - 8mm H | 0.49 |
| 47-3109SP | 47-3109C | 12mm W x 12mm L, Parallel - 9mm H | 0.55 |
| 47-3110SP | 47-3110C | 12mm W x 12mm L, Parallel - 10mm H | 0.61 |
| 47-3111SP | 47-3111C | 12mm W x 12mm L, Parallel - 11mm H | 0.67 |
| 47-3112SP | 47-3112C | 12mm W x 12mm L, Parallel - 12mm H | 0.73 |

15mm x 12mm Parallel Implants

| Sterile Part # | Non-Sterile Part # | Description | Graft Vol. (cc) |
|----------------|--------------------|------------------------------------|-----------------|
| 47-4105SP | 47-4105C | 15mm W X 12mm L, Parallel - 5mm H | 0.43 |
| 47-4106SP | 47-4106C | 15mm W X 12mm L, Parallel - 6mm H | 0.51 |
| 47-4107SP | 47-4107C | 15mm W X 12mm L, Parallel - 7mm H | 0.59 |
| 47-4108SP | 47-4108C | 15mm W X 12mm L, Parallel - 8mm H | 0.67 |
| 47-4109SP | 47-4109C | 15mm W X 12mm L, Parallel - 9mm H | 0.76 |
| 47-4110SP | 47-4110C | 15mm W X 12mm L, Parallel - 10mm H | 0.84 |
| 47-4111SP | 47-4111C | 15mm W X 12mm L, Parallel - 11mm H | 0.92 |
| 47-4112SP | 47-4112C | 15mm W X 12mm L, Parallel - 12mm H | 1.00 |



*Items in blue available upon request only.

CONSTRUX Mini PEEK Implants (Cont.)

| 12mm x 12mm Lordotic Implants | | | |
|-------------------------------|--------------------|---------------------------------------|-----------------|
| Sterile Part # | Non-Sterile Part # | Description | Graft Vol. (cc) |
| 47-3005SP | 47-3005C | 12mm WX 12mm L, 5° Lordotic - 5mm H | 0.28 |
| 47-3006SP | 47-3006C | 12mm WX 12mm L, 5° Lordotic - 6mm H | 0.34 |
| 47-3007SP | 47-3007C | 12mm WX 12mm L, 5° Lordotic - 7mm H | 0.40 |
| 47-3008SP | 47-3008C | 12mm WX 12mm L, 5° Lordotic - 8mm H | 0.46 |
| 47-3009SP | 47-3009C | 12mm WX 12mm L, 5° Lordotic - 9mm H | 0.52 |
| 47-3010SP | 47-3010C | 12mm WX 12mm L, 5° Lordotic - 10mm H | 0.58 |
| 47-3011SP | 47-3011C | 12mm WX 12mm L, 5° Lordotic - 11mm H | 0.64 |
| 47-3012SP | 47-3012C | 12mm WX 12mm L, 5° Lordotic - 12mm H | 0.70 |
| 47-3206SP | N/A | 12mm WX 12mm L, 10° Lordotic - 6mm H | 0.31 |
| 47-3207SP | N/A | 12mm WX 12mm L, 10° Lordotic - 7mm H | 0.37 |
| 47-3208SP | N/A | 12mm WX 12mm L, 10° Lordotic - 8mm H | 0.43 |
| 47-3209SP | N/A | 12mm WX 12mm L, 10° Lordotic - 9mm H | 0.49 |
| 47-3210SP | N/A | 12mm WX 12mm L, 10° Lordotic - 10mm H | 0.55 |
| 47-3211SP | N/A | 12mm WX 12mm L, 10° Lordotic - 11mm H | 0.61 |
| 47-3212SP | N/A | 12mm WX 12mm L, 10° Lordotic - 12mm H | 0.67 |

| 15mm x 12mm Lordotic Implants | | | |
|-------------------------------|--------------------|---------------------------------------|-----------------|
| Sterile Part # | Non-Sterile Part # | Description | Graft Vol. (cc) |
| 47-4005SP | 47-4005C | 15mm WX 12mm L, 5° Lordotic - 5mm H | 0.38 |
| 47-4006SP | 47-4006C | 15mm WX 12mm L, 5° Lordotic - 6mm H | 0.47 |
| 47-4007SP | 47-4007C | 15mm WX 12mm L, 5° Lordotic - 7mm H | 0.55 |
| 47-4008SP | 47-4008C | 15mm WX 12mm L, 5° Lordotic - 8mm H | 0.63 |
| 47-4009SP | 47-4009C | 15mm WX 12mm L, 5° Lordotic - 9mm H | 0.71 |
| 47-4010SP | 47-4010C | 15mm WX 12mm L, 5° Lordotic - 10mm H | 0.79 |
| 47-4011SP | 47-4011C | 15mm WX 12mm L, 5° Lordotic - 11mm H | 0.88 |
| 47-4012SP | 47-4012C | 15mm WX 12mm L, 5° Lordotic - 12mm H | 0.96 |
| 47-4206SP | N/A | 15mm WX 12mm L, 10° Lordotic - 6mm H | 0.42 |
| 47-4207SP | N/A | 15mm WX 12mm L, 10° Lordotic - 7mm H | 0.50 |
| 47-4208SP | N/A | 15mm WX 12mm L, 10° Lordotic - 8mm H | 0.58 |
| 47-4209SP | N/A | 15mm WX 12mm L, 10° Lordotic - 9mm H | 0.67 |
| 47-4210SP | N/A | 15mm WX 12mm L, 10° Lordotic - 10mm H | 0.75 |
| 47-4211SP | N/A | 15mm WX 12mm L, 10° Lordotic - 11mm H | 0.83 |
| 47-4212SP | N/A | 15mm WX 12mm L, 10° Lordotic - 12mm H | 0.91 |

*Items in blue available upon request only.

CONSTRUX Mini PEEK Implants (Cont.)

15mm x 15mm Lordotic Implants

| Sterile Part # | Description | Graft Vol. (cc) |
|----------------|---------------------------------------|-----------------|
| 47-5005SP | 15mm WX 15mm L, 5° Lordotic - 5mm H | 0.53 |
| 47-5006SP | 15mm WX 15mm L, 5° Lordotic - 6mm H | 0.64 |
| 47-5007SP | 15mm WX 15mm L, 5° Lordotic - 7mm H | 0.75 |
| 47-5008SP | 15mm WX 15mm L, 5° Lordotic - 8mm H | 0.87 |
| 47-5009SP | 15mm WX 15mm L, 5° Lordotic - 9mm H | 0.98 |
| 47-5010SP | 15mm WX 15mm L, 5° Lordotic - 10mm H | 1.09 |
| 47-5011SP | 15mm WX 15mm L, 5° Lordotic- 11mm H | 1.21 |
| 47-5012SP | 15mm WX 15mm L, 5° Lordotic - 12mm H | 1.32 |
| 47-5206SP | 15mm WX 15mm L, 10° Lordotic - 6mm H | 0.56 |
| 47-5207SP | 15mm WX 15mm L, 10° Lordotic - 7mm H | 0.68 |
| 47-5208SP | 15mm WX 15mm L, 10° Lordotic - 8mm H | 0.79 |
| 47-5209SP | 15mm WX 15mm L, 10° Lordotic - 9mm H | 0.91 |
| 47-5210SP | 15mm WX 15mm L, 10° Lordotic - 10mm H | 1.02 |
| 47-5211SP | 15mm WX 15mm L, 10° Lordotic- 11mm H | 1.14 |
| 47-5212SP | 15mm WX 15mm L, 10° Lordotic - 12mm H | 1.25 |

17mm x 15mm Lordotic Implants

| Sterile Part # | Description | Graft Vol. (cc) |
|----------------|---------------------------------------|-----------------|
| 47-4505SP | 17mm WX 15mm L, 5° Lordotic - 5mm H | 0.57 |
| 47-4506SP | 17mm WX 15mm L, 5° Lordotic - 6mm H | 0.69 |
| 47-4507SP | 17mm WX 15mm L, 5° Lordotic - 7mm H | 0.82 |
| 47-4508SP | 17mm WX 15mm L, 5° Lordotic - 8mm H | 0.94 |
| 47-4509SP | 17mm WX 15mm L, 5° Lordotic - 9mm H | 1.06 |
| 47-4510SP | 17mm WX 15mm L, 5° Lordotic - 10mm H | 1.19 |
| 47-4511SP | 17mm WX 15mm L, 5° Lordotic- 11mm H | 1.31 |
| 47-4512SP | 17mm WX 15mm L, 5° Lordotic - 12mm H | 1.43 |
| 47-4606SP | 17mm WX 15mm L, 10° Lordotic - 6mm H | 0.61 |
| 47-4607SP | 17mm WX 15mm L, 10° Lordotic - 7mm H | 0.74 |
| 47-4608SP | 17mm WX 15mm L, 10° Lordotic - 8mm H | 0.86 |
| 47-4609SP | 17mm WX 15mm L, 10° Lordotic - 9mm H | 0.99 |
| 47-4610SP | 17mm WX 15mm L, 10° Lordotic - 10mm H | 1.11 |
| 47-4611SP | 17mm WX 15mm L, 10° Lordotic- 11mm H | 1.24 |
| 47-4612SP | 17mm WX 15mm L, 10° Lordotic - 12mm H | 1.36 |

*Items in blue available upon request only.

CONSTRUX® Mini PTC

PEEK TITANIUM COMPOSITE SPACER SYSTEM

Combines the Advantages of PEEK and Titanium

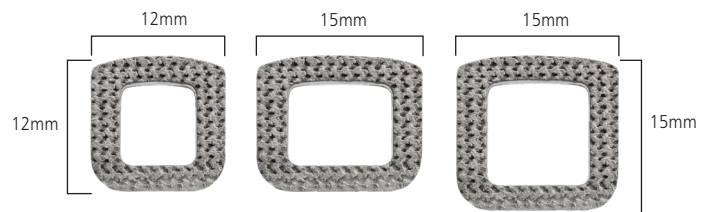
The CONSTRUX® Mini PTC Spacer System has been designed to optimize Anterior Cervical Procedures with a proprietary technology that combines PEEK and titanium into a porous interbody solution for the cervical spine. This PEEK/Titanium hybrid is designed with an optimal porosity and pore size to create a 3D porous structure that allows the patient bone to grow into the porous titanium endplates. The implant also features a PEEK core with porous titanium endplates which allows for post and intraoperative imaging without image distortion compared to metal designs currently on the market. The CONSTRUX Mini PTC Spacer System offers three footprints to address the cervical interbody fusion solution. The implants are available in both parallel and lordotic angles with heights of 6mm-12mm in one-millimeter increments.

Competitive Design Advantages

- Porous titanium endplates with microscopic roughened surface and nano-scale surface features allow bone to grow within
- PEEK core to obtain imaging properties while assessing fusion
- Large center opening for packing bone grafting material
- Multiple implant options to enable various surgical solutions
- Straightforward instrumentation for easy implantation

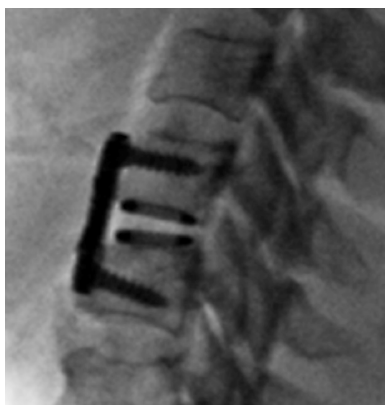
3 Footprints

- 12mm x 12mm
- 15mm x 12mm
- 15mm x 15mm

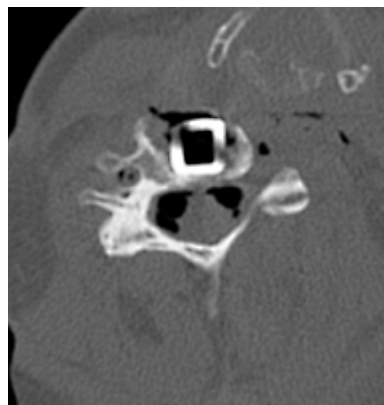


Parallel and Lordotic (5°)

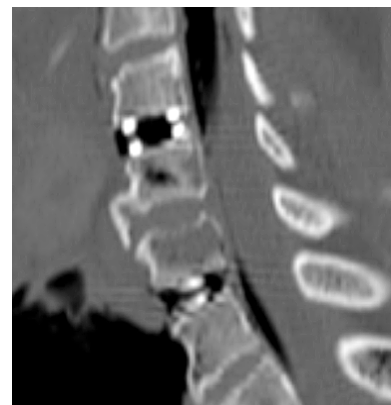
- 6mm-12mm heights
- 1mm increments



Lateral fluoroscopy with CONSTRUX Mini PTC



Axial CT scan with CONSTRUX Mini PTC



Sagittal CT scan with CONSTRUX Mini PTC

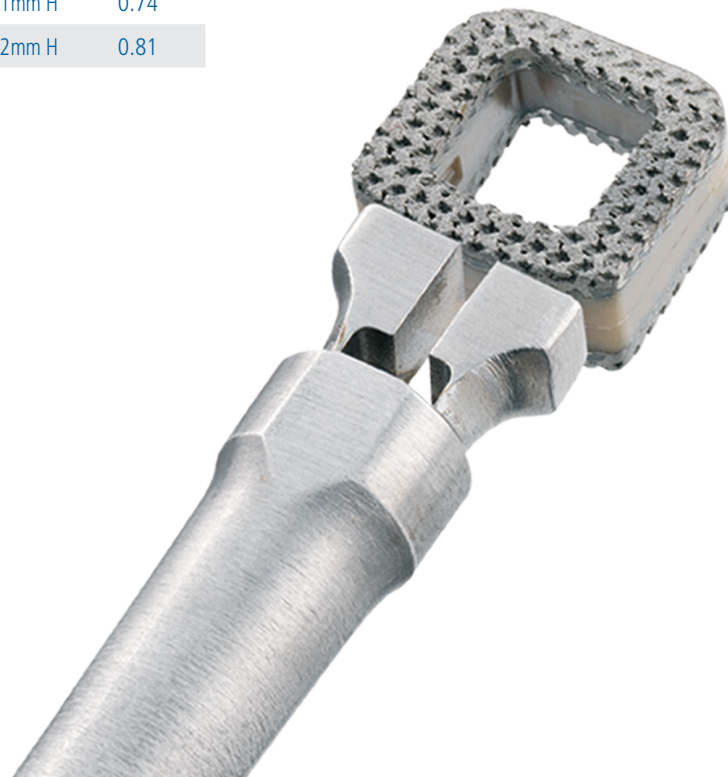
Construx Mini PTC Implant Set Part# 37-7000

| Part # | Description | Graft Vol. (cc) |
|-----------|---------------------------------------|-----------------|
| 37-3006SP | 12mm W x 12mm L, 5° Lordotic - 6mm H | 0.28 |
| 37-3007SP | 12mm W x 12mm L, 5° Lordotic - 7mm H | 0.33 |
| 37-3008SP | 12mm W x 12mm L, 5° Lordotic - 8mm H | 0.37 |
| 37-3009SP | 12mm W x 12mm L, 5° Lordotic - 9mm H | 0.43 |
| 37-3010SP | 12mm W x 12mm L, 5° Lordotic - 10mm H | 0.48 |
| 37-3011SP | 12mm W x 12mm L, 5° Lordotic - 11mm H | 0.52 |
| 37-3012SP | 12mm W x 12mm L, 5° Lordotic - 12mm H | 0.57 |
| 37-3106SP | 12mm W x 12mm L, Parallel - 6mm H | 0.31 |
| 37-3107SP | 12mm W x 12mm L, Parallel - 7mm H | 0.35 |
| 37-3108SP | 12mm W x 12mm L, Parallel - 8mm H | 0.40 |
| 37-3109SP | 12mm W x 12mm L, Parallel - 9mm H | 0.45 |
| 37-3110SP | 12mm W x 12mm L, Parallel - 10mm H | 0.50 |
| 37-3111SP | 12mm W x 12mm L, Parallel - 11mm H | 0.55 |
| 37-3112SP | 12mm W x 12mm L, Parallel - 12mm H | 0.60 |
| 37-4006SP | 15mm W x 12mm L, 5° Lordotic - 6mm H | 0.39 |
| 37-4007SP | 15mm W x 12mm L, 5° Lordotic - 7mm H | 0.46 |
| 37-4008SP | 15mm W x 12mm L, 5° Lordotic - 8mm H | 0.53 |
| 37-4009SP | 15mm W x 12mm L, 5° Lordotic - 9mm H | 0.60 |
| 37-4010SP | 15mm W x 12mm L, 5° Lordotic - 10mm H | 0.67 |
| 37-4011SP | 15mm W x 12mm L, 5° Lordotic - 11mm H | 0.74 |
| 37-4012SP | 15mm W x 12mm L, 5° Lordotic - 12mm H | 0.81 |

Construx Mini PTC Implant Set Part# 37-7000

| Part # | Description | Graft Vol. (cc) |
|-----------|---------------------------------------|-----------------|
| 37-4106SP | 15mm W x 12mm L, Parallel - 6mm H | 0.43 |
| 37-4107SP | 15mm W x 12mm L, Parallel - 7mm H | 0.50 |
| 37-4108SP | 15mm W x 12mm L, Parallel - 8mm H | 0.57 |
| 37-4109SP | 15mm W x 12mm L, Parallel - 9mm H | 0.64 |
| 37-4110SP | 15mm W x 12mm L, Parallel - 10mm H | 0.71 |
| 37-4111SP | 15mm W x 12mm L, Parallel - 11mm H | 0.77 |
| 37-4112SP | 15mm W x 12mm L, Parallel - 12mm H | 0.85 |
| 37-5006SP | 15mm W x 15mm L, 5° Lordotic - 6mm H | 0.55 |
| 37-5007SP | 15mm W x 15mm L, 5° Lordotic - 7mm H | 0.65 |
| 37-5008SP | 15mm W x 15mm L, 5° Lordotic - 8mm H | 0.75 |
| 37-5009SP | 15mm W x 15mm L, 5° Lordotic - 9mm H | 0.84 |
| 37-5010SP | 15mm W x 15mm L, 5° Lordotic - 10mm H | 0.94 |
| 37-5011SP | 15mm W x 15mm L, 5° Lordotic - 11mm H | 1.04 |
| 37-5012SP | 15mm W x 15mm L, 5° Lordotic - 12mm H | 1.14 |

*Items in blue available upon request only.



*Items in blue available upon request only.

Double Ended Trials

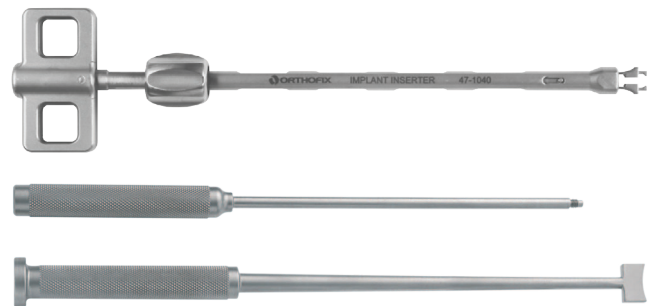
| Part # | Description |
|---------|---|
| 47-6006 | 12mm W x 12mm L, 5° Lordotic - 6/7mm H |
| 47-6008 | 12mm W x 12mm L, 5° Lordotic – 8/9mm H |
| 47-6010 | 12mm W x 12mm L, 5° Lordotic – 10/11mm H |
| 47-6012 | 12mm W x 12mm L, 5° Lordotic – 12/13mm H |
| 47-6106 | 15mm W x 12mm L, 10° Lordotic - 6/7mm H |
| 47-6108 | 15mm W x 12mm L, 10° Lordotic – 8/9mm H |
| 47-6110 | 15mm W x 12mm L, 10° Lordotic – 10/11mm H |
| 47-6112 | 15mm W x 12mm L, 10° Lordotic – 12/13mm H |
| 47-6206 | 15mm W x 12mm L x 6/7mm H, 5° Lordotic |
| 47-6208 | 15mm W x 12mm L x 8/9mm H, 5° Lordotic |
| 47-6210 | 15mmW x 12mm L x 10/11mm H, 5° Lordotic |
| 47-6212 | 15mm W x 12mm L x 12/13mm H, 5° Lordotic |
| 47-6306 | 15mm W x 12mm L x 6/7mm H, 10° Lordotic |
| 47-6308 | 15mm W x 12mm L x 8/9mm H, 10° Lordotic |
| 47-6310 | 15mmW x 12mm L x 10/11mm H, 10° Lordotic |
| 47-6312 | 15mm W x 12mm L x 12/13mm H, 10° Lordotic |
| 47-6406 | 15mm W x 15mm L x 6/7mm H, 5° Lordotic |
| 47-6408 | 15mm W x 15mm L x 8/9mm H, 5° Lordotic |
| 47-6410 | 15mm W x 15mm L x 10/11mm H, 5° Lordotic |
| 47-6412 | 15mm W x 15mm L x 12/13mm H, 5° Lordotic |
| 47-6506 | 15mm W x 15mm L x 6/7mm H, 10° Lordotic |
| 47-6508 | 15mm W x 15mm L x 8/9mm H, 10° Lordotic |
| 47-6510 | 15mm W x 15mm L x 10/11mm H, 10° Lordotic |
| 47-6512 | 15mm W x 15mm L x 12/13mm H, 10° Lordotic |
| 47-6806 | 17mm W x 15mm L x 6/7mm H, 5° Lordotic |
| 47-6808 | 17mm W x 15mm L x 8/9mm H, 5° Lordotic |
| 47-6810 | 17mm W x 15mm L x 10/11mm H, 5° Lordotic |
| 47-6812 | 17mm W x 15mm L x 12/13mm H, 5° Lordotic |
| 47-6716 | 17mm W x 15mm L x 6/7mm H, 10° Lordotic |
| 47-6718 | 17mm W x 15mm L x 8/9mm H, 10° Lordotic |
| 47-6720 | 17mm W x 15mm L x 10/11mm H, 10° Lordotic |
| 47-6722 | 17mm W x 15mm L x 12/13mm H, 10° Lordotic |

Rasps

| Part # | Description |
|---------|--|
| 47-9130 | CONSTRUX Mini Spacer System - Rasp Kit |
| 47-9306 | 12mm W x 12mm D x 6mm H, 5° Lordotic |
| 47-9307 | 12mm W x 12mm D x 7mm H, 5° Lordotic |
| 47-9308 | 12mm W x 12mm D x 8mm H, 5° Lordotic |
| 47-9309 | 12mm W x 12mm D x 9mm H, 5° Lordotic |
| 47-9506 | 15mm W x 12mm D x 6mm H, 5° Lordotic |
| 47-9507 | 15mm W x 12mm D x 7mm H, 5° Lordotic |
| 47-9508 | 15mm W x 12mm D x 8mm H, 5° Lordotic |
| 47-9509 | 15mm W x 12mm D x 9mm H, 5° Lordotic |
| 47-9616 | 15mm W x 15mm D x 6mm H, 5° Lordotic |
| 47-9617 | 15mm W x 15mm D x 7mm H, 5° Lordotic |
| 47-9618 | 15mm W x 15mm D x 8mm H, 5° Lordotic |
| 47-9619 | 15mm W x 15mm D x 9mm H, 5° Lordotic |
| 47-9716 | 17mm W x 15mm D x 6mm H, 5° Lordotic |
| 47-9717 | 17mm W x 15mm D x 7mm H, 5° Lordotic |
| 47-9718 | 17mm W x 15mm D x 8mm H, 5° Lordotic |
| 47-9719 | 17mm W x 15mm D x 9mm H, 5° Lordotic |

Instruments, Cases and Trays

| Part # | Description |
|---------|--|
| 47-1040 | Implant Inserter, CONSTRUX Mini |
| 30-1030 | Impactor |
| 47-1020 | Trial Handle, CONSTRUX Mini |
| 83-9040 | Universal Rasp |
| 47-9120 | CONSTRUX Mini Spacer System - Instrument Kit |



*Items in blue available upon request only.

Please visit [Orthofix.com/IFU](https://www.orthofix.com/IFU) for full information on indications for use, contraindications, warnings, precautions, adverse reactions and sterilization.

Caution: Federal law (USA) restricts this device to sale by or on the order of a physician. Proper surgical procedure is the responsibility of the medical professional. Operative techniques are furnished as an informative guideline. Each surgeon must evaluate the appropriateness of a technique based on his or her personal medical credentials and experience.



Orthofix
3451 Plano Parkway
Lewisville, Texas 75056-9453 USA
1.214.937.3199
1.888.298.5700
www.orthofix.com



Medical Device Safety Services (MDSS):
Schiffgraben 41
30175, Hannover
Germany
www.mdss.com

Rx Only
CE²⁷⁹⁷

Orthofix products or services referenced herein are trademarks or registered trademarks of Orthofix Medical Inc. and its group of companies. Any rights not expressly granted herein are reserved.